

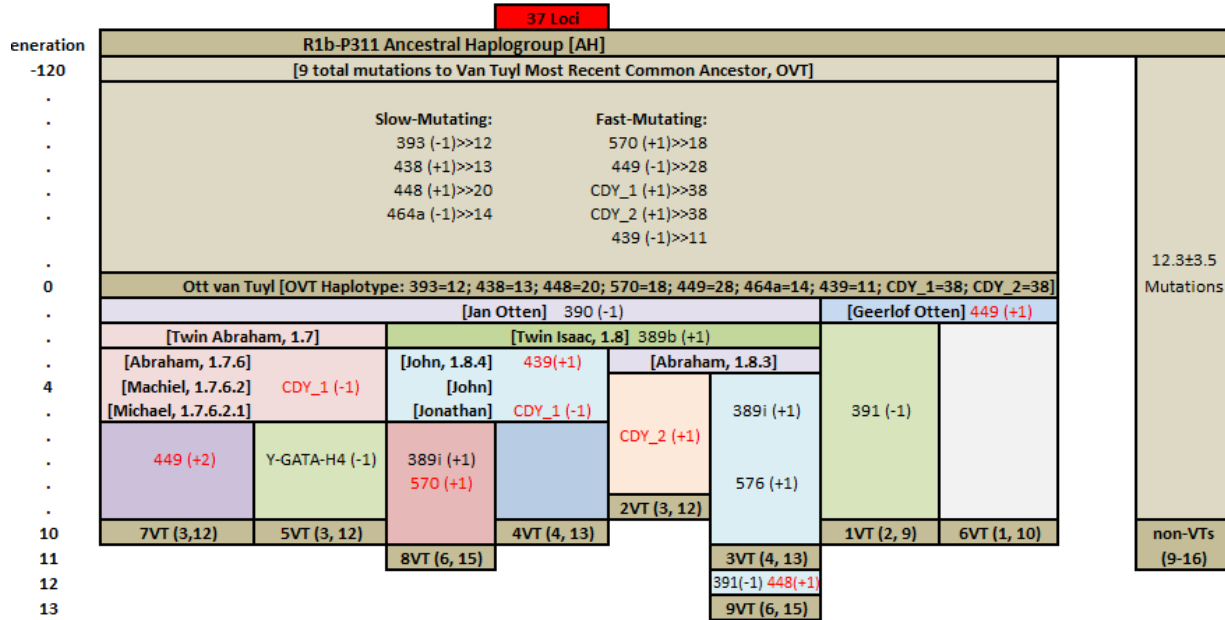
Report on the VAN_TUYL Surname Project Y-STR Results
9/3/2019
Rory Van Tuyl

Summary:

The VAN_TUYL Surname Project at FTDNA has, since 2012, examined Y-chromosome DNA from a total of 15 men:

1. Three from the unrelated *Van Tuyl van Serooskerken* family;
2. One Van Tuyl adoptee determined to be of the *Terwilliger* male line;
3. Two Van Tuyl men descended from John Van Tuyl of NY (b. 1760), who have been determined to NOT be descendants of Ott van Tuyl of Gameren;
4. Nine men in the U.S. and The Netherlands determined to be descendants of Ott van Tuyl of Gameren.

Here is the phylogeny of the nine Gameren descendants:



Legend: **XVT (mutations since OVT, mutations since AH)** [This is the NUMBER of mutations, not the Genetic Distance]

Loci from OVT Haplotype which have NOT mutated since [OVT]: DYS393 [12]; DYS464a [14]; DYS438 [13]

Loci from OVT Haplotype which have mutated at least once since [OVT]: DYS570; DYS449; DYS439; CDY_1; CDY_2; DYS448

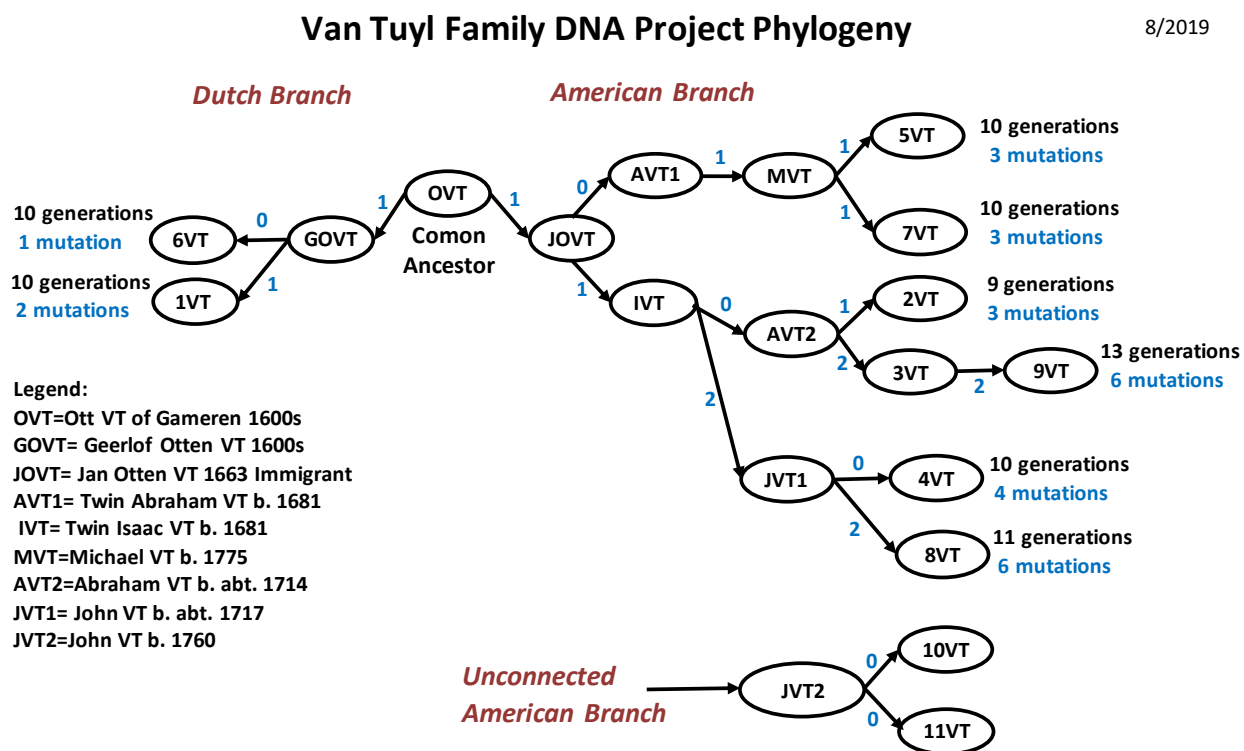
Key Findings:

These men are between 9 and 13 generations descended from Ott van Tuyl of Gameren

All in the American line descend from either twin Abraham or twin Isaac (b. 1681)

The two Dutch descendants have an average of 0.15 mutations per generation; the Americans have an average of 0.39 mutations per generation: 0.3 for Abraham's descendants, 0.42 for Isaac's

Here is a representation of the phylogeny showing relationship structure and mutations:



Recent Result: Two Van Tuyls are not descended from Ott van Tuyl Gameren

Two participants, both with genealogical connections to John Van Tuyl of New York State (b. 1760), turned out to be completely unrelated to the Gameren descendants.¹ There was reason to hope that they would be descendants of the Pirate Otto Van Tuyl (b. 1661), and they may indeed be genealogically descended from him, but they are not genetic descendants.

What are the possible reasons for this?

1. John VT or one of his male ancestors was adopted into the Van Tuyl family.
2. John VT or one of his male ancestors adopted the Van Tuyl name for some reason.
3. John VT was simply descended from a Van Tuyl immigrant to America other than Jan Otten VT
4. John VT or one of his male ancestors was conceived by a Van Tuyl woman and a non-Van Tuyl man.

¹ They are members of Y Haplogroup I-M170; Gameren descendants are members of R-3232.

Here, for reference, is the complete table of 37 Y-STRs for VAN_TUYL project members:

	1	2	3	4	5	6	7	8	9	10	11	12
Name	DYS393	DYS390	DYS19	DYS391	DYS385a	DYS385b	DYS426	DYS388	DYS439	DYS389i	DYS392	DYS389b
1VT	12	24	14	10	11	14	12	12	11	13	13	16
2VT	12	23	14	11	11	14	12	12	11	13	13	17
3VT	12	23	14	11	11	14	12	12	11	14	13	17
4VT	12	23	14	11	11	14	12	12	12	13	13	17
5VT	12	23	14	11	11	14	12	12	11	13	13	16
6VT	12	24	14	11	11	14	12	12	11	13	13	16
7VT	12	23	14	11	11	15	12	12	11	13	13	16
8VT	12	23	14	11	11	14	12	12	12	14	13	17
9VT	12	23	14	10	11	14	12	12	11	14	13	17
OVT	12	24	14	11	11	14	12	12	11	13	13	16
AHT	13	24	14	11	11	14	12	12	12	13	13	16

	13	14	15	16	17	18	19	20	21	22	23	24	25
Name	DYS458	DYS459	DYS459	DYS455	DYS454	DYS447	DYS437	DYS448	DYS449	DYS464a	DYS464b	DYS464c	DYS464d
1VT	17	9	10	11	11	25	15	20	29	14	15	17	17
2VT	17	9	10	11	11	25	15	20	28	14	15	17	17
3VT	17	9	10	11	11	25	15	20	28	14	15	17	17
4VT	17	9	10	11	11	25	15	20	28	14	15	17	17
5VT	17	9	10	11	11	25	15	20	28	14	15	17	17
6VT	17	9	10	11	11	25	15	20	29	14	15	17	17
7VT	17	9	10	11	11	25	15	20	30	14	15	17	17
8VT	17	9	10	11	11	25	15	20	28	14	15	17	17
9VT	17	9	10	11	11	25	15	21	28	14	15	17	17
OVT	17	9	10	11	11	25	15	20	28	14	15	17	17
AHT	17	9	10	11	11	25	15	19	29	15	15	17	17

	26	27	28	29	30	31	32	33	34	35	36	37
Name	DYS460	Y-GATA-H4	YCA-IIa	YCA-IIb	DYS456	DYS607	DYS576	DYS570	CDY_1	CDY_2	DYS442	DYS438
1VT	11	11	19	23	15	15	18	18	38	38	12	13
2VT	11	11	19	23	15	15	18	18	38	39	12	13
3VT	11	11	19	23	15	15	19	18	38	38	12	13
4VT	11	11	19	23	15	15	18	18	37	38	12	13
5VT	11	10	19	23	15	15	18	18	37	38	12	13
6VT	11	11	19	23	15	15	18	18	38	38	12	13
7VT	11	11	19	23	15	15	18	18	37	38	12	13
8VT	11	11	19	23	15	15	18	19	37	38	12	13
9VT	11	11	19	23	15	15	19	18	38	38	12	13
OVT	11	11	19	23	15	15	18	18	38	38	12	13
AHT	11	11	19	23	15	15	18	17	37	37	12	12

Black=No mutations from Ancestral Haplotype [AHT]; Red=1 mutation from Ancestral Haplotype [AHT]; Blue=2 mutations from Ancestral Haplotype [AHT]
 Gray Fill = Mutated from Most Recent Common Ancestor [OVT]

Y-STRs for 10VT and 11VT: [Haplogroup I-M170]

Name	DYS393	DYS390	DYS19	DYS391	DYS385a	DYS385b	DYS426	DYS388	DYS439	DYS389i	DYS392	DYS389b
10VT	13	25	17	11	14	16	11	13	11	12	11	17
11VT	13	25	17	11	14	16	11	13	11	12	11	17

Name	DYS458	DYS459	DYS459	DYS455	DYS454	DYS447	DYS437	DYS448	DYS449	DYS464a	DYS464b	DYS464c	DYS464d
10VT	16	8	10	10	12	24	15	19	29	14	14	15	15
11VT	16	8	10	10	12	24	15	19	29	14	14	15	15

Name	DYS460	Y-GATA-H4	YCA-IIa	YCA-IIb	DYS456	DYS607	DYS576	DYS570	CDY_1	CDY_2	DYS442	DYS438
10VT	10	10	19	19	14	14	16	19	36	38	12	10
11VT	10	10	19	19	14	14	16	19	36	38	12	10